

PUMPS



PZ 2000 TRIPLEX DRILLING MUD PUMP

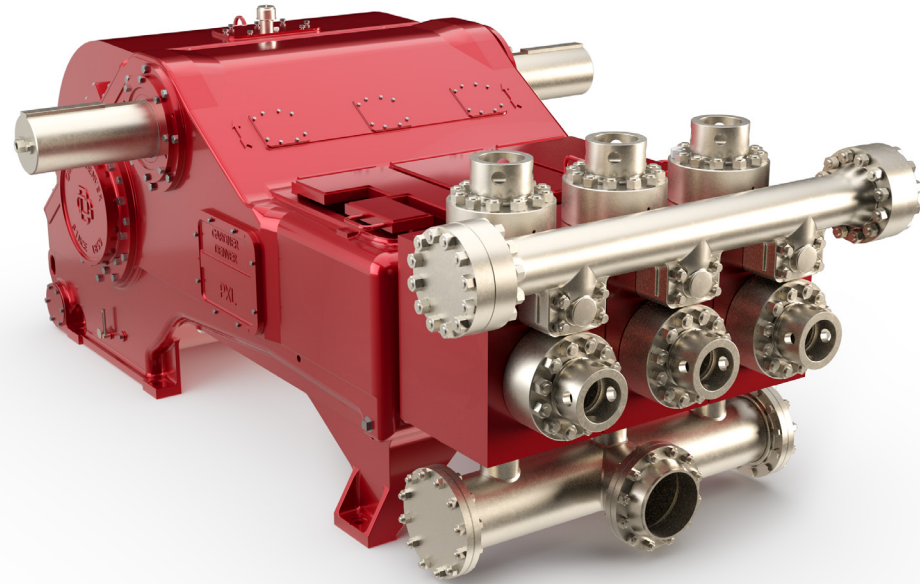
Gardner Denver's PZ 2000 is a 2000hp triplex drilling mud pump that features 7,500 psi fluid end modules and an 11" stroke. With today's drilling applications consisting of longer laterals and increased pressures, the PZ 2000 is the ideal choice for super-spec drilling rigs and rigs requiring upgrades. Packaged with Redline™ Series consumables, customers can expect unmatched performance while lowering their total cost of ownership.

BEST-IN-CLASS FEATURES

- Enlarged dual roller-bearing connecting rods for increased load-carrying capacity (186,875 lbs.)
- Heavy duty straight roller bearings to improve strength and provide greater sprocket/sheave engagement
- Frame is ductile iron casting, 80,000 psi tensile strength, monolithic structure with internal rubbing of critical areas for improved strength and higher horsepower rating

STANDARD FEATURES

- Improved main bearing retention system for superior performance and serviceability
- Advanced homogenous nodular iron power frame with internal ribbing for improved strength
- Expanded eccentric wall thickness with improved tensile strength
- Increase in cross-sectional area of connecting rod and crosshead slide, improving bearing capacity and strength
- Double-row spherical roller bearing carry the eccentric
- Increased length of the double-extended jackshaft provides a more generous sprocket/sheave engagement
- Increased diameter of heavy-duty straight roller bearings improves strength
- Enlarged dual roller-bearing connecting rods for increased load carrying capacity
- Gears cut from heat-treated alloy steel



SPECIFICATIONS

Maximum Input	2,000 BHP (1,491 kW)
Maximum RPM	115 RPM
Stroke Length	11 in (279 mm)
Piston Load	186,875 lbs (831,261 N)
Pump Weight	41,750 lbs (18,975 kg)
Gear Ratio	4.38:1

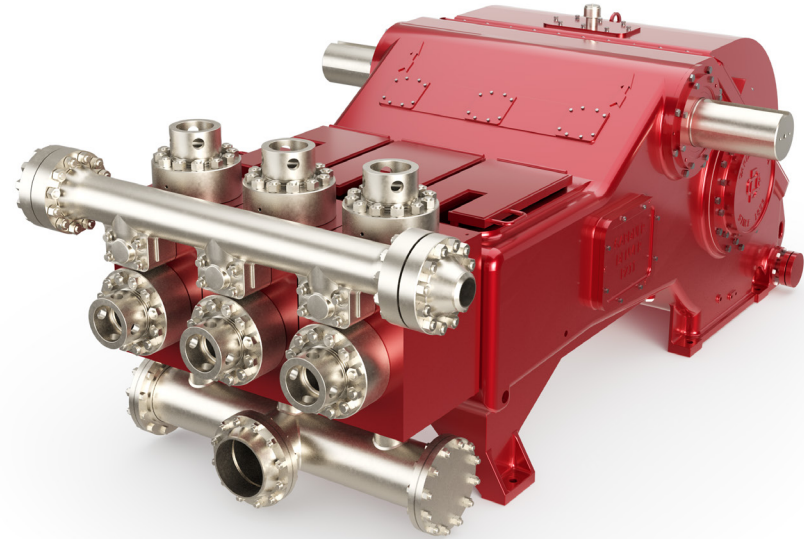
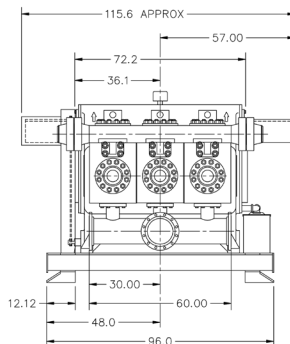
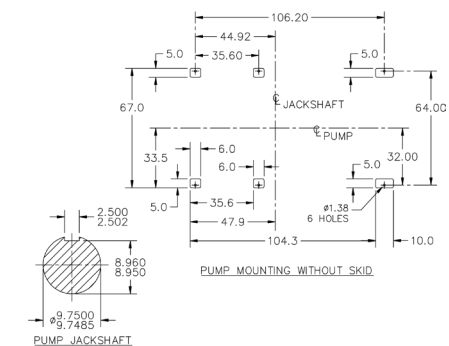
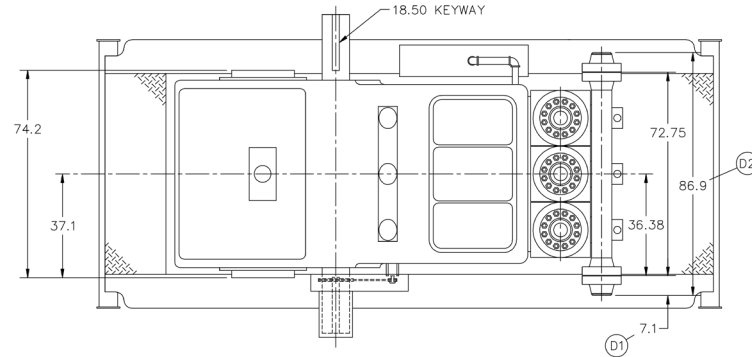
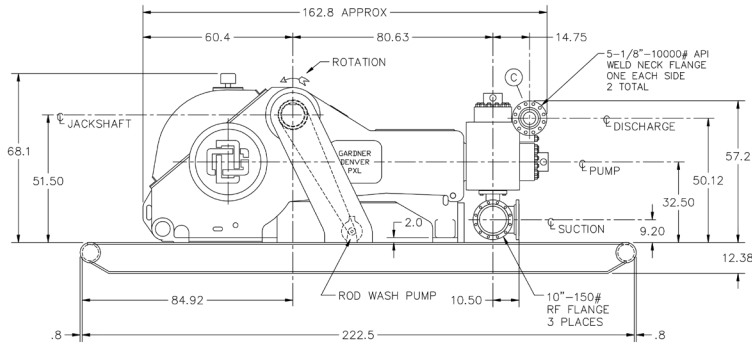
PISTON CYLINDER		DISPLACEMENT – DRILLING SERVICE				MAXIMUM PSI		PUMP RPM	JACKSHAFT RPM
DIAMETER		PER REVOLUTION		MAXIMUM FLOW RATE		PSI	bar		
in	mm	Gallon	Liters	GPM	LPM				
7	178	5.50	20.81	632	2393	4856	335	115	504
6.5	165	4.74	17.94	545	2064	5632	388		
6.25	159	4.38	16.59	504	1908	6091	420		
6	152	4.04	15.29	465	1758	6609	456		
5.5	140	3.39	12.85	390	1478	7500	517		
5	127	2.80	10.62	323	1221	7500	517		

Weight: Complete pump with large steel skid - 46,250 pounds.
Ratings are based on 90% mechanical efficiency and 100% volumetric efficiency

PZ 2000

TRIPLEX DRILLING MUD PUMP

SPECIFICATIONS



OPTIONAL FEATURES

- Steel skid with or without decking
- Centrifugal charge pump
- Suction and/or discharge dampeners
- Oil heat exchanger cooling system
- External electric-powered lube pump
- Custom packaging

CONNECT WITH US

www.gardnerdenverpumps.com

1-866-GDPumps

| +1-918-GDPumps

 GardnerDenverPumps

 @GDPumps

 GardnerDenverPumpsTV

 GardnerDenverPumps